



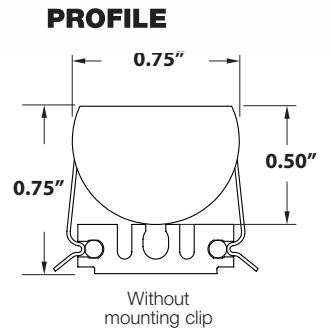
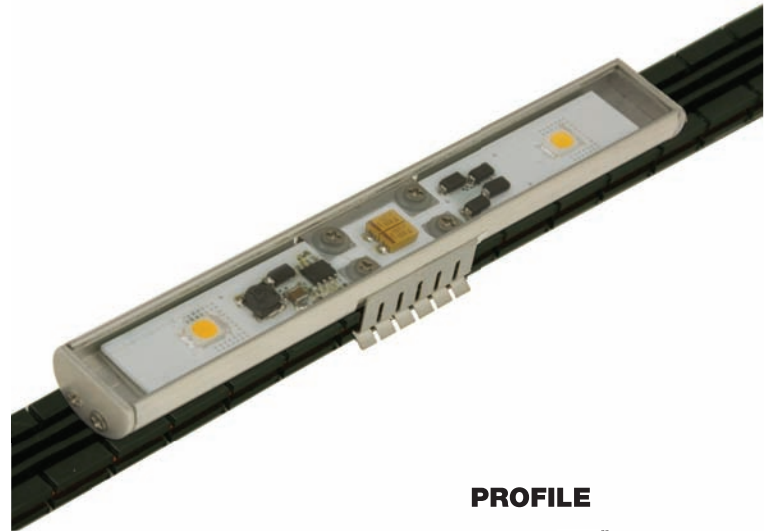
MINICOVE LED MC4 SERIES

APPLICATIONS

- Cove and under/over cabinet lighting capabilities*
- Toe kick, cornice and curtain pocket
- Consult factory for cove dimensional requirements

LED MODULES

- Snaps into existing Minicove track for retrofit applications
- 3.25" Nominal O.C. LED spacing
- 4W per foot
- 20% brighter light than 5W xenon lamps using approximately 80% less energy
- Minimalistic size/profile: 0.75"W x 0.75"H
- 18.44", 11.79" and 5.15" lengths available
- Available in 12-24V (AC or DC) input voltage using a Class I transformer (Sold Separately)
- 3000°K - Warm White
(Additional colors available soon - consult factory)
- Optics: 120° Beam Spread
- 50,000 hour LED life span
- 70-80 lumen output per LED
- 1.5" Gap spacer included for field spacing



TRACK AND FEEDS

- Extruded Noryl® track with 12-gauge solid copper conductors
- All track is flexible for lateral and radial curves to fit applications
- Required mounting clips create an air gap to improve air circulation
- Max run length: 12V - 50'
24V - 100'
- System consists of 93" track with modules attached at factory

DRIVERS

- Dimming available (consult factory)
- Class I transformer required - See CV Class I transformer specsheet

THERMAL MANAGEMENT

- Aluminum extrusion provides superior thermal management in conjunction with the Minicove track air gap system

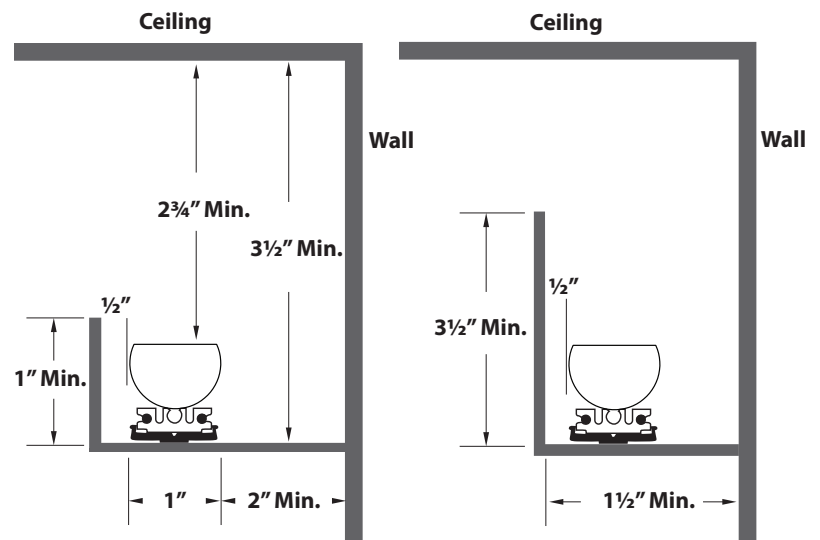
RETROFIT

- Snaps into existing Minicove track for easy upgrading from Xenon to LED

COMING SOON

- Additional optics
- Higher wattages
- Rectilinear optics

COVE DIMENSIONAL RECOMMENDATIONS FOR EVEN ILLUMINATION



Recommend with matte white surfaces for even illumination



MINICOVE LED MC4 SERIES



ORDERING INFORMATION

MINICOVE LED COMPLETE SYSTEM

DESCRIPTION	CAT. #	LED SPACING	# OF LEDS PER MODULE	LENS	LED MODULE SIZE	MODULE SPACING	LED LIGHT ENGINE ID (SEE TABLE BELOW)
Complete Minicove LED system	MC4332CA001	3.3"	2	Clear Acrylic	5.15" model	1.50"	001
	MC4334CA001	3.3"	4	Clear Acrylic	11.79" model	1.50"	001
	MC4336CA001	3.3"	6	Clear Acrylic	18.44" model	1.50"	001

* We will determine exact combination to meet project requirements

MINICOVE LED MODULE (WHEN SOLD SEPARATELY)

DESCRIPTION	CAT. #	LED SPACING	# OF LEDS PER MODULE	MODULE LENGTH	MODULE OPTICS	LENS	SOLD BY	LED LIGHT ENGINE ID (SEE TABLE BELOW)
Minicove LED Module	MCL332CA001	3.3"	2	5.15" model	None	Clear Acrylic	Each	001
	MCL334CA001	3.3"	4	11.79" model	None	Clear Acrylic	Each	001
	MCL336CA001	3.3"	6	18.44" model	None	Clear Acrylic	Each	001

MINICOVE LED LIGHT ENGINE ID DETAILS

LED LIGHT ENGINE ID	LED WATTAGE	LED COLOR TEMPERATURE	BEAM SPREAD	SECONDARY OPTICS	INPUT VOLTAGE
001	1W	Warm - 3000°K Nominal*	120°	None	12-24V AC/DC

* Requires low voltage transformers. See CV Class I transformers specification sheets.

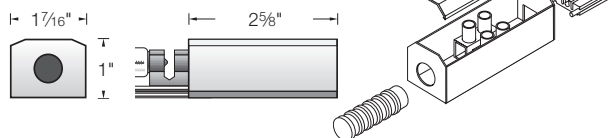
TRACK AND FEEDS

CAT #	DESCRIPTION
MC2200	Power Feed
MC2101	Base with conductor
MC2210	Terminal block
MC2213	90° +/- Track connector
MC2214	In-line track connector
MC2310	Noryl Mounting clips

MC2200

POWER FEEDS

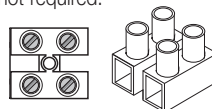
Single complete Junction Box for power feeds of Minicove. Includes terminal block.



MC2210

TERMINAL BLOCK

Set screw connections for power feeds and track connections where junction box is not required.



MC2310

MOUNTING CLIPS

The mounting clips, constructed of high-temperature Noryl®, create an air gap, limiting heat transfer to the mounting surface.



* LEDs are binned with variances of +/- 175°K. It is recommended to purchase replacement modules within that bin to ensure consistent color temperature for needed replacements. Please refer to exact bin number on packing list.

CV Lighting reserves the right to change specifications without notice for product improvement purposes.